

2015 Annual General Meeting

17 February 2015

Agenda

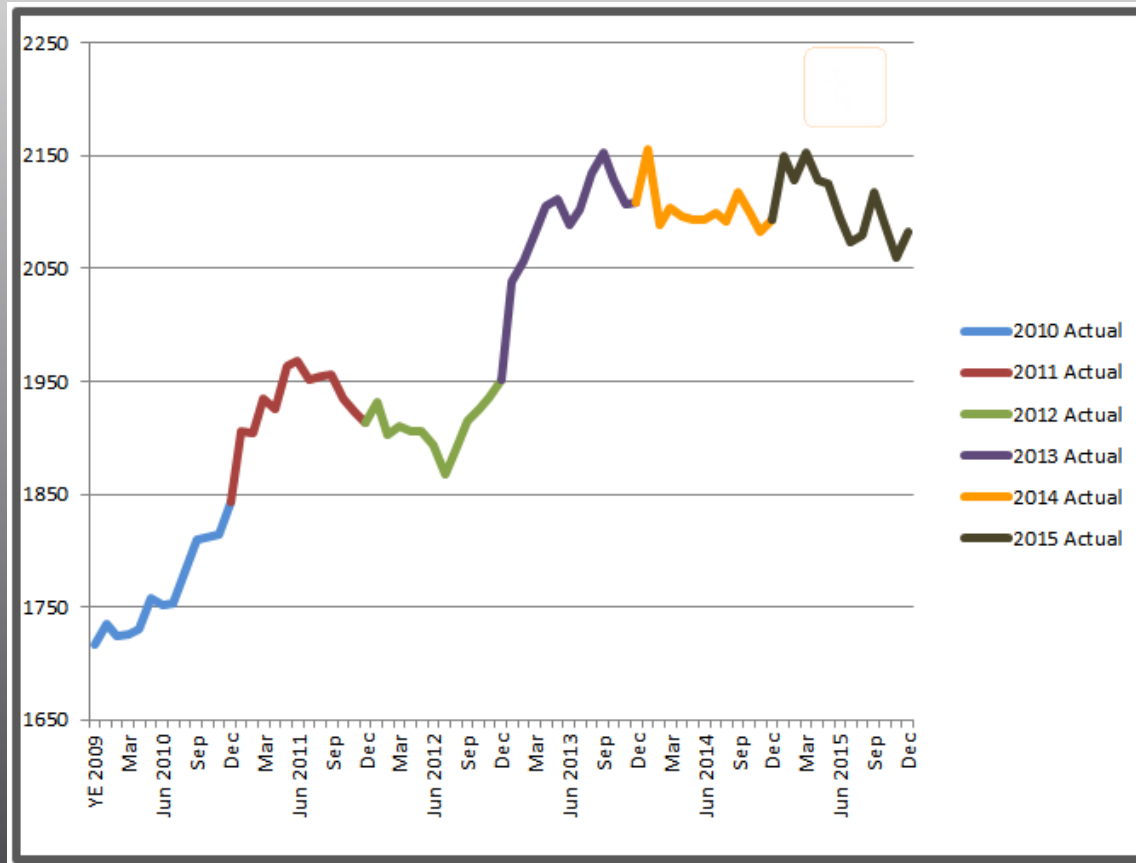
1. Confirmation of quorum
2. Acceptance of Agenda
3. Acceptance of the 2014 AGM Minutes
4. Presentation of the 2015 Annual Report
5. Presentation of the 2016 Operating Budget
6. Nomination and election of Chapter officers for 2016
7. Recognition of retiring board members
8. Other business
9. Adjourn the 2015 AGM

2014 AGM Summary

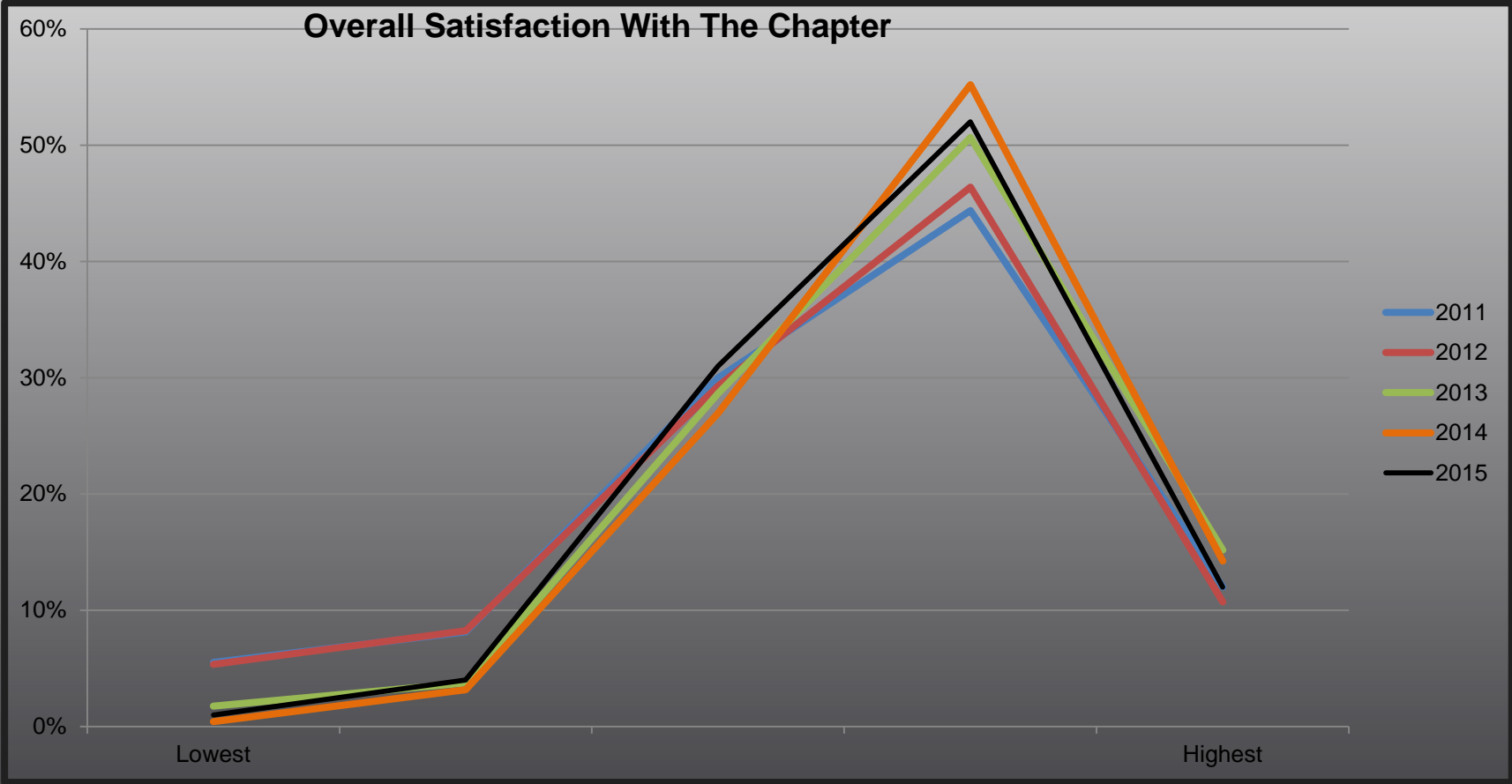
- 43 present (quorum is 20)
- Agenda accepted
- Minutes of 2013 AGM accepted
- 2014 Annual Report accepted
- 2015 Operating Budget presented
- 3 bylaw changes proposed and accepted
- Proposed slate of 2015 Officers accepted
- Retirees recognized
- No other business

2015 Annual Report

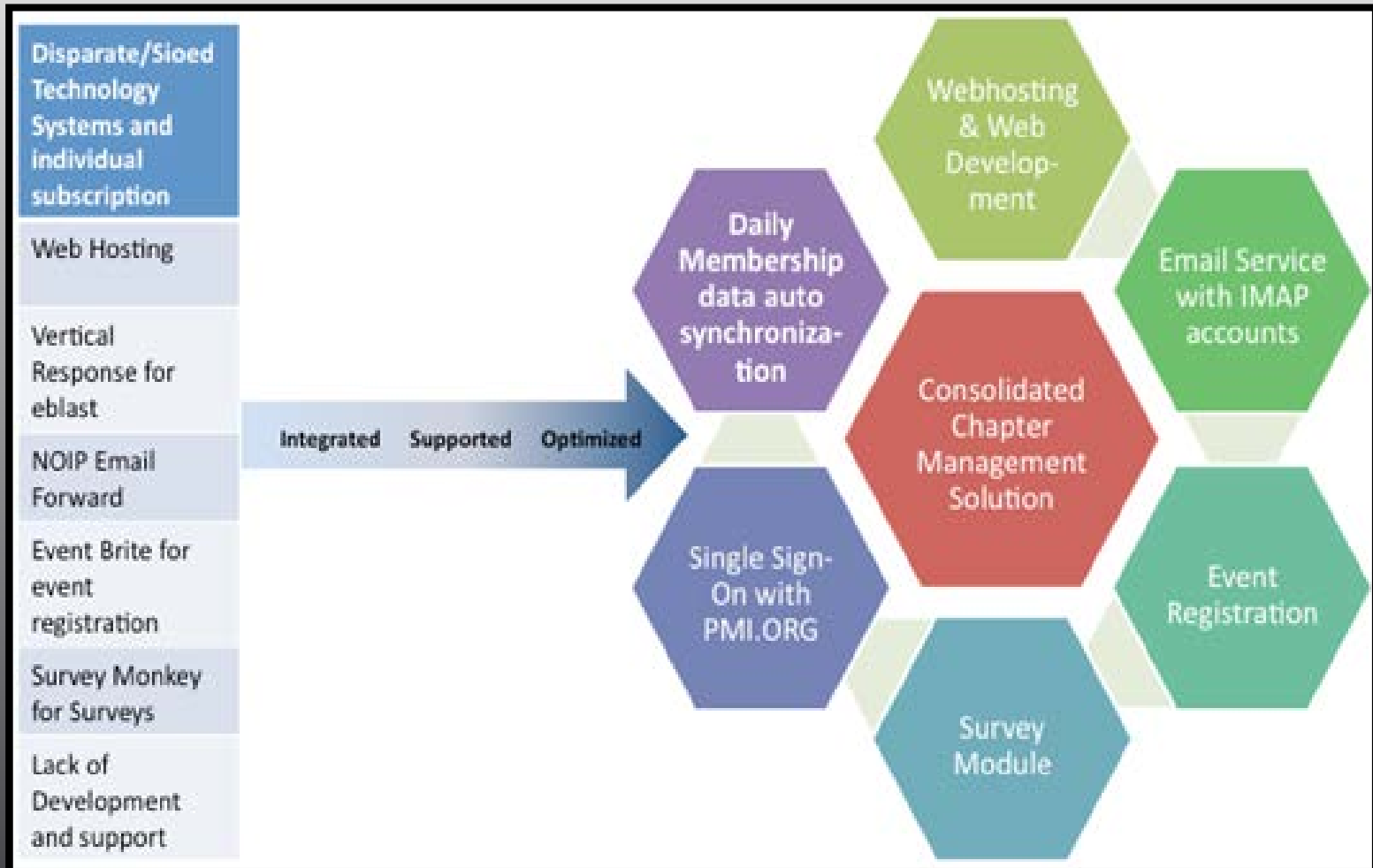
Chapter Size Static



Member Satisfaction Steady



Chapter Management System Replaced



PM-V Ready for Spinoff

- Will continue to benefit the Profession
- Financially healthy
- Strong network
- Benefits arise from spin-off
- Board approves in principal

2015 Revenue exceeded expenses

2015 Actual vs. Budget

For the Year Ending Dec 31st

	2015 Budget	2015 Actual	Over <Under> Budget	%
R Board	0	0	0	
E Education	142,400	125,524	(16,876)	-11.9%
V Finance	0	1,123	1,123	
E Marketing	0	0	0	
N Membership	72,636	77,903	5,267	7.3%
U Mentorship	1,200	1,466	266	22.1%
E Operations	0	0	0	
Outreach	23,000	9,889	(13,111)	-57.0%
PM Volunteers	23,000	24,037	1,037	4.5%
Professional Development	62,000	0	(62,000)	-100.0%
Programs	34,505	33,737	(768)	-2.2%
Total Revenue	358,741	273,678	(85,063)	
E Board	(21,450)	(18,816)	(2,634)	-12.3%
X Education	(85,406)	(65,792)	(19,614)	-23.0%
P Finance	(35,475)	(20,197)	(15,278)	-43.1%
E Marketing	(8,875)	(3,107)	(5,768)	-65.0%
N Membership	(13,300)	(3,897)	(9,403)	-70.7%
S Mentorship	(1,600)	(41)	(1,559)	-97.4%
E Operations	(16,049)	(15,922)	(127)	-0.8%
Outreach	(4,695)	(506)	(4,189)	-89.2%
PM Volunteers	(29,750)	(25,521)	(4,229)	-14.2%
Professional Development	(68,425)	(4,063)	(64,362)	-94.1%
Programs	(83,973)	(69,709)	(14,264)	-17.0%
Total Expenses	(368,998)	(227,573)	(141,425)	-38.3%
Excess <Deficiency> of Revenues Over Expenses	(10,257)	46,106	56,362	

2015 Balance Sheet

	FY 2015
Current Assets	
Cash and Short Term I	390,486
Prepaid Expense	975
TOTAL ASSETS	391,461
Current Liabilities	
Accounts Payable	17,557
Audit Accrual	12,000
Accrued Expenses Pay	2,625
TOTAL LIABILITY	32,182
Equity	
Retained Earnings - Pr	313,172
Current Earnings	46,106
TOTAL EQUITY	359,278
LIABILITIES AND EQUITY	391,461

ASSET		
Current Assets		
Chequing Bank A	23,941.29	
Vancity - Account	10,000.00	
Vancity-Account	23,542.04	
GIC- CAD Account	225,000.00	
Chequing Bank A	49,832.68	
Pay Pal Account	39,034.00	
USD Cash-in CAD	68,968.43	
USD Cash-Ctrl Ac	-49,832.68	
Total Cash		390,485.76
Prepaid Expenses		975
Total Current Assets		391,460.76
Capital Assets		
Chapter Equipme	5,739.43	
Accum. Amort. -F	-5,739.43	
Net - Furniture & Equipment		0
Computer Equipn	886.36	
Accum.Amort.-Co	-886.36	
Net-Computer Equipment		0
Total Capital Assets		0
Other Non-Current Assets		
Computer Softwa	1,620.00	
Accum.Amort-Sof	-1,620.00	
Net-Computer Software		0
Total Other Non-Current Assets		0
TOTAL ASSET		391,460.76

LIABILITY		
Current Liabilities		
Accounts Payable		16,966.46
Audit Fee Payable		12,000.00
Accrued Expenses Payable		2,625.00
GST/HST Charged	2,545.67	
GST/HST Paid on	-1,743.78	
GST/HST Filed ret	-210.92	
GST Owning (Refund)		590.97
Total Current Liabilities		32,182.43
TOTAL LIABILITY		32,182.43
EQUITY		
Owners Equity		
Retained Earnings - Previous Year		313,172.10
Current Earnings		46,106.23
Total Owners Equity		359,278.33
TOTAL EQUITY		359,278.33
LIABILITIES AND EQUITY		391,460.76

2016 Operating Budget

	2015 Actual	2016 Budget	2016 Budget vs. 2015	%
R Board	0	0	0	
E Education	125,524	125,000	(524)	-0.4%
V Finance	1,123	0	(1,123)	-100.0%
E Marketing	0	0	0	
N Membership	77,903	74,005	(3,898)	-5.0%
U Mentorship	1,466	1,400	(66)	-4.5%
E Operations	0	0	0	
Outreach	9,889	19,000	9,111	92.1%
PM Volunteers	24,037	28,000	3,963	16.5%
Professional Development	0	154,685	154,685	
Programs	33,737	37,120	3,383	10.0%
Total Revenue	273,678	439,210	165,532	
E Board	(18,816)	(23,208)	4,392	23.3%
X Education	(65,792)	(75,020)	9,228	14.0%
P Finance	(20,197)	(31,471)	11,274	55.8%
E Marketing	(3,107)	(11,015)	7,908	254.5%
N Membership	(3,897)	(8,700)	4,803	123.2%
S Mentorship	(41)	(1,600)	1,559	3806.3%
E Operations	(15,922)	(18,210)	2,288	14.4%
Outreach	(506)	(5,000)	4,494	887.4%
PM Volunteers	(25,521)	(21,625)	(3,896)	-15.3%
Professional Development	(4,063)	(175,758)	171,695	4225.8%
Programs	(69,709)	(89,300)	19,591	28.1%
Total Expenses	(227,573)	(460,907)	233,335	102.5%
Excess <Deficiency> of Revenues Over Expenses	46,106	(21,698)	(67,803)	

Elections

Proposed Slate

Role	Currently Elected	2015 AGM Action	Current Status
President	Ron Manson	Elect Qudsia Ahmed until 2017 AGM	
VP Finance	Mark Freeman	Re-elect Mark Freeman until 2017 AGM	
VP Education	Mehran Jamshidi	Elect Mehran Jamshidi until 2017 AGM	Appointed by Board (for Eamonn)
VP Professional Development	Peggy Ah Yong	Re-elect Peggy Ah Yong until 2017 AGM	
VP Programs	Rodolfo Yoshii	Elect Rosmary Conte until 2017 AGM	
VP Operations	Ram Kodali	No action required until 2016 AGM	
VP Outreach	Fadi Attal	Elect Fadi Attal until 2016 AGM	Appointed by Board (for NO CANDIDATE in 2014)
VP Membership	Qudsia Ahmed	NO CANDIDATE	
VP Marketing	Carrie Ng	Elect Nalini Vadivelan until 2016 AGM	
VP PM-Volunteers	Shawn Hawkins	No action required until 2016 AGM	
Past President	Rich Brodowski	Role taken over by Ron Manson	Rich's term ends when Ron steps down

Retiring from the Board

- Carrie Ng
- Rodolfo Yoshii
- Rich Brodowski

also

- Eamonn O'Laocha

Any Other Business?

Thank you for your time and
attention.

Have a good evening.